

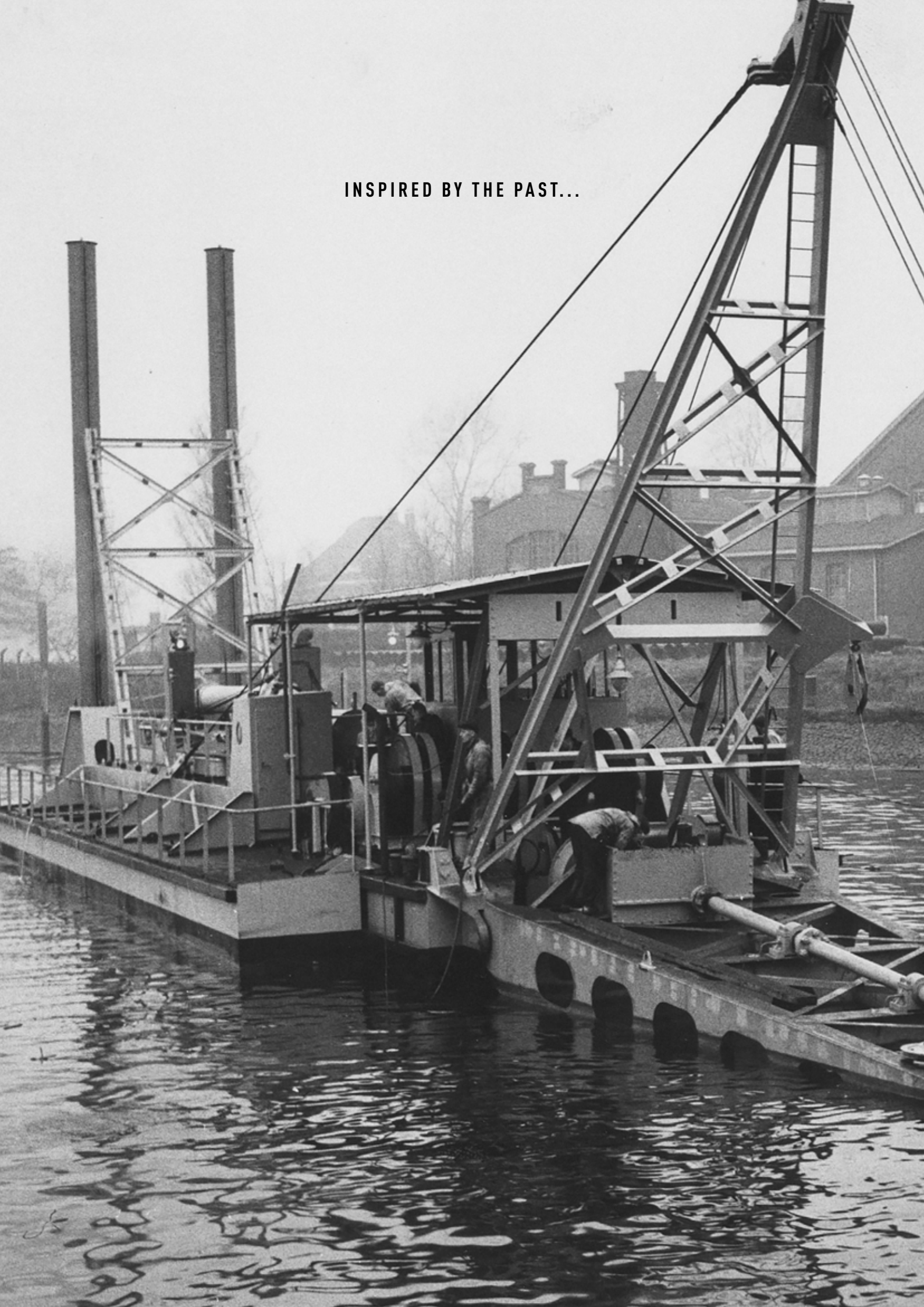


# JAN DE NUL.

COMPANY PROFILE



INSPIRED BY THE PAST...



DRIVEN BY THE FUTURE...



# CONTENT.

6.

SIX GENERATIONS OF ENTREPRENEURSHIP

12.

OUR CARE FOR PEOPLE AND PLANET

20.

OUR INNOVATIVE MINDSET

24.

OUR OVERALL SOLUTIONS

OFFSHORE – MARINE – CIVIL – ENVIRONMENT – PROJECT DEVELOPMENT





# SIX GENERATIONS OF ENTREPRENEURSHIP

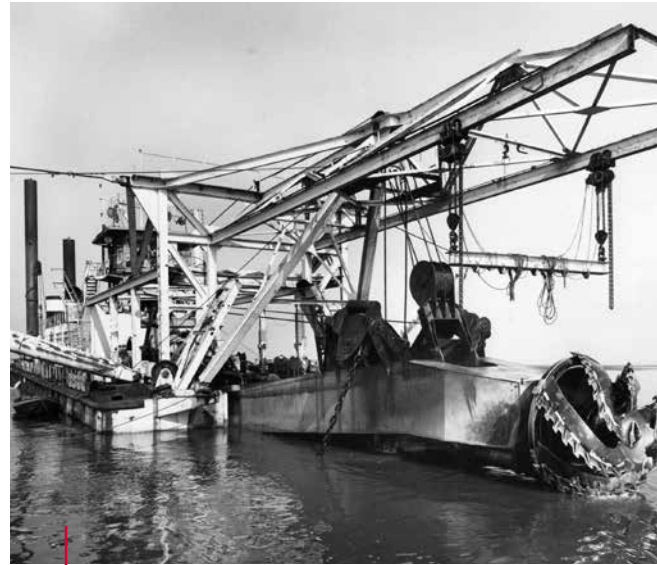
---

Jan De Nul Group shapes both water and land. We enable the production of offshore energy and maintain the depth of waterways. We build new ports and create extra land. We realise complex infrastructure works and erect any type of building. We tackle pollution in whatever form. For many generations already, the De Nul family invests in people and in having its own equipment. We have a passion for business but also want to do things our way, which gives us a unique edge within the sector.

*A vessel is traditionally baptised by a godmother. In 1986, accompanied by Jan Pieter and Dirk, Julie De Nul baptises her first vessel, the cutter suction dredger Leonardo da Vinci.*

# FAMILY BUSINESS.

Entrepreneurship runs in the blood of the De Nul family. For six generations already, they invest energetically in a company resolutely going for growth.



For the first dredging assignment Jan Frans Jozef De Nul buys a cutter suction dredger, which he names after his eldest son: Jan Pieter I.



Frans De Nul, pictured here with his grandson Jan Frans Jozef, expanded the joinery business of his father Leo.

## GENERATIONS OF JOINERS

Leo De Nul is the first entrepreneur of the family. In 1849, he sets up a business in Aalst as building contractor and 'qualified staircase manufacturer and joiner'. His son, Frans, takes over the business in 1873. In 1914, his sons Isidoor and Gustaaf join the business as well. After the difficult First World War years, 'Frans De Nul & Zoons' expands its activities. Isidoor and Gustaaf hire extra personnel and continue the family tradition with their 'Mechanical Joinery & Staircase Manufacturing Workshop'.



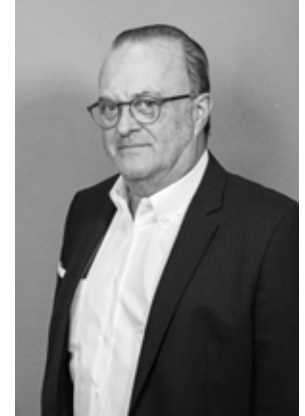
This invoice from Frans De Nul goes back to 1908.





## JAN FRANS JOZEF DE NUL

Jan Frans Jozef, the son of Isidoor, graduates in 1937 as a civil engineer. At the age of 24, he sets up the limited-liability company PVBA Jan De Nul, with the purpose 'to execute all types of public and private works'. The company grows and moves in 1940 to the Tragel site in Aalst. In 1953, Jan De Nul executes its first dredging project for the construction of the highway Brussels – Ostend. For this contract, the company purchases its first cutter suction dredger. The assignments continue to increase and the family invests in the best equipment and expansion of its fleet. In 1968, the company executes its first project abroad in Le Havre in France. The first step to be in the international market has happened.



## JAN PIETER & DIRK DE NUL

In 1978, Jan Pieter, the fifth De Nul generation, assumes control of the family business. In 1981, Dirk joins the board as well. In the nineteen eighties, the two brothers realise their ambition for further expansion of the company's activities, well beyond the European borders. The first offshore oil and gas related contract is won in 1991. Jan De Nul Group confirms its position as a leading global player, taking the lead in dredging works for the construction of the airport Chek Lap Kok (1993) and Palm Island Jebel Ali in Dubai (2002). Activities continue to expand with property development, specialised environmental works and foundation techniques. Thanks to its continuous investment programmes, the company builds an impressive fleet that is ready for the future. With the new generation of installation vessels, the Voltaire and Les Alizés, Jan De Nul Group will continue to play a leading role in the renewables industry.



## PIETER JAN & JULIE DE NUL

Julie and Pieter Jan represent the sixth generation of family managers. Julie strongly believes in the power of good personnel. Her focus is on the right man or woman in the right place. She is convinced that the involvement and commitment of employees help the company to fulfil its current pioneering role. She puts her weight behind everything that involves our employees and stimulates their personal growth. Pieter Jan De Nul supervises the international project sites. He closely monitors the operational side of projects and actively contributes to the search for potential clients and challenging projects for the company. The drive to grow and find ground-breaking projects clearly runs in his blood.

# VISION, MISSION, VALUES.

The vision, mission and values of Jan De Nul Group reflect our innovative, pioneering and socially relevant character. Driven by our widely disseminated corporate philosophy, we work together every day to build a better future. One team, one plan!



*Open communication and the sharing of knowledge and expertise are of crucial importance.*

## VISION

Jan De Nul Group enhances the lives of people, connects communities and improves infrastructure worldwide, through unique and innovative solutions.

## MISSION

Jan De Nul Group pushes the boundaries of marine, civil construction and environmental projects worldwide. Working together with our customers, safely and responsibly, we bring experience, methods, motivated teams and in-house designed equipment to IMAGINE what is possible, THINK through the solution and ACT to deliver.



## IMAGINE, THINK, ACT

Every employee at Jan De Nul Group works every day according to our ITA philosophy. Good preparation and operational control are key to our success. It is in our nature to work in this way. Quality, safety, improved processes and satisfied stakeholders: these things matter! With a no-nonsense mentality and in cooperation with our clients, partners and subcontractors, we all pursue the same objective.

**Imagine:** We always keep the aimed at result in mind, weigh risks and opportunities.

**Think:** We discuss and draw up a detailed plan that we communicate to all parties involved.

**Act:** When executing a project, we all work towards our final goal. Whenever we see opportunities for improvements or risks, we immediately stop the activities. We consult and adapt our plan.

## VALUES

### CHALLENGE

Through creativity, a practical approach and continuous innovation we overcome challenges and achieve a better tomorrow.

### RESPECT

We care about people and the environment we work in. We create sustainable solutions with the highest level of quality, safety and durability.

### CONNECT

We work as one team. With trust and open communication we share our knowledge and expertise both within the company and with partners, subcontractors and clients.

### FOCUS

We deliver successful results by focusing on operational control and the best possible solution for all stakeholders. We take initiative, embrace responsibility and exceed expectations.





A vertical photograph of a beach scene, showing a sandy foreground, a metal railing, and a cloudy sky over the ocean.

# OUR CARE FOR PEOPLE AND PLANET

---

Sustainability is an intrinsic part of Jan De Nul Group's DNA. It is not just another tick in the box. In everything that we do, with whomever we work or wherever we are active, we always strive for the best possible result for people and planet.

*In Texel, the Netherlands, we realised a new safety sand dune and an integrated nature reserve. We also included a vantage point to allow people to enjoy the wonderfully upgraded environment optimally.*

# PEOPLE.

People are the number one priority of Jan De Nul Group. We create a safe work environment in which we stimulate human growth and watch over everyone's wellbeing. We do this through our sports and wellness programme, intensive training courses and a comprehensive safety policy. We strive for these same values in our partnerships with both our clients, partners, suppliers and subcontractors, both locally and internationally.



## TRAINING PROGRAMME

Jan De Nul Group cherishes talent and prepares employees for the future and for the challenges that await them. We find it important that our employees continually learn new knowledge and skills. We train and encourage them to think out of the box. Through both internal and external training courses, we create a culture of lifelong learning so that everyone can share his or her knowledge with others across the world.



*Our internal training centre, Jan De Nul Academy, offers classroom and digital training programmes for every job.*



*Through our internal Expert Academy platform, colleagues across the world share experiences gained during the execution of projects.*



*A wide range of varied FIT activities brings colleagues with different jobs and from different departments together in a relaxed atmosphere. Perfect teambuilding!*

## WELLNESS PROGRAMME

Food, In balance, Training and sports. Or, in short, FIT@JDN. With our internal sports and wellness programme, we offer sports and leisure activities as well as a healthy mental balance to all our employees. Whatever their job or the time zone or location in which they are active, we make sure that every employee can enjoy this programme to the maximum extent possible.



## SAFETY AND QUALITY

The safety of our personnel and all external workers who are involved in our work is very important to us. Both on board our vessels and on our construction sites, we apply high safety standards. Thoroughly training and continuously retraining our employees in the applicable rules and procedures, we can maintain operational control during high-risk activities. We remain committed to anchor safety and quality even deeper in all our activities because we strongly believe that prevention is always better than the cure.

# PLANET.



Jan De Nul Group works every day on shaping a better planet. During the design and execution of a project, we take well-thought-out measures to minimise our impact on the planet. Through a comprehensive energy management policy, we strongly reduce our energy consumption.

*With our Nature-Based Solutions, we go for integrated building techniques based on and to the benefit of nature. The idea behind these solutions is that nature develops and maintains itself.*

## PROJECT DESIGN

Protection of biodiversity is already taken into account in the engineering phase. We follow to the maximum extent possible features and performances of ecosystems. Through these Nature-Based Solutions, we apply construction and remediation techniques that make use of natural materials.





*We replace our construction site accommodation by new ecological site offices that consume 80 percent less energy.*

## PROJECT EXECUTION

By using innovative techniques and by permanently monitoring our activities, we keep the impact on fauna and flora under control. More so, we even reduce this impact.

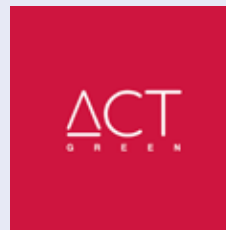


*We strongly dampen the sound waves generated when driving piles into the seabed by using sound-absorbing installation tools and through the simultaneous creation of sound-insulating air bubble screens all around the vessel.*

## ENERGY MANAGEMENT

Under the name 'Act Green', Jan De Nul lowers its own energy consumption. We closely monitor all energy flows and take active measures to reduce them drastically.

This immediately translates into our day-to-day practice: our new ecological site offices consume 80 percent less energy, we fuel part of our vessels with fully renewable biofuels and we continue to work on the electrification of our vehicle fleet.



# SUSTAINABLE BUSINESS.

Through the very nature and geographical distribution of our activities, Jan De Nul Group enters into contact with many different cultures and communities. We stand for honest work and take our corporate social responsibility to heart. To this purpose, we apply the most stringent operating standards and show commitment within the local communities in which we operate.



## BUSINESS ETHICS

All our employees have the greatest respect for the community in which they operate. More so, they encourage others to act in an ethically correct way. We expect the same commitment from all parties with which we work together.



*In Benin, our project team organised a beach clean-up during which we gathered and disposed of no less than 4.5 tonnes of waste.*

## STAKEHOLDER COMMITMENT

We work closely together with clients, employees, suppliers and local communities. By including all parties in our sustainable business commitments, we continue to innovate, improve our risk management and increase our sphere of influence.

## LOCAL COMMITMENT

We involve the local community in the realisation of our projects. But we do more than that: we provide training and create employment, we support local NGOs and organise local initiatives.



# OUR INNOVATIVE MINDSET

---

Jan De Nul Group is future-proof and permanently works on the world of tomorrow. With our Ultra-Low Emission vessels, we are a ground-breaking pioneer in our sector. But we also share our knowledge beyond the sector to stimulate innovative thinking.

*The ULEv vessel Tristão da Cunha is equipped with an ingenious filter system that (almost entirely) eliminates the impact on air pollution. Immediately after its delivery, the vessel set to work in the port of Payra in Bangladesh.*



*The vessels are equipped with an exhaust gas treatment system and can be recognised by their blue funnel with ULEv logo.*

## ULTRA-LOW EMISSION VESSELS

Ultra-Low Emission vessels or ULEVs. The new generation of Jan De Nul Group vessels is ready for a sustainable future. The diesel engines of our ULEVs are equipped with exhaust gas treatment systems that are state-of-the-art: a catalyst renders nitrogen oxides harmless whereas a soot filter blocks even the tiniest particles. In this way, we extract up to 99 percent of dust particles from exhaust gases.

The technique is based on filters proven in Swiss tunnels to filter all exhaust gases of vehicles and heavy machinery. Jan De Nul Group succeeded in applying this technology to the shipping industry. A great example of our in-house design capabilities and of our pioneering role within our sector. Jan De Nul Group is the first company in the shipping industry that meets the very strict European emission standards.



## INNOVATIVE IN CONCEPT AND EXECUTION

Innovative thinking is anchored in our corporate culture. From the very start of a project, we encourage our employees to search for optimal solutions. If something does not exist yet, we conceive and make it ourselves.

Our Research & Development department studies the market and, based on its findings, launches innovative ideas within the company.



*On the Schelphoek beach, we created four stone reefs that soon became the natural habitat of seaweed and oysters.*



*This in-house designed machine digs in cables into the ground in an intertidal area. The earth pressure of the machine is smaller than that of a person so that it can even be deployed in nature reserves.*

## SHARING KNOW-HOW

To be able to come up with innovative ideas and solutions, sharing expertise and experience is crucial, both within Jan De Nul Group and beyond. We centralise the experience of our employees across the world and use it as a basis for every new project. We actively share our know-how and insights with educational institutions and (sector) federations worldwide. Interaction with new and refreshing ideas encourages us to think out of the box.



*Jan De Nul Group is a founding member of 'De Blauwe Cluster', a partnership dedicated to the development and promotion of economic activities at sea.*





An aerial photograph showing a large-scale construction or industrial site. In the foreground, there's a body of water with a yellow and black buoy line. The middle ground features several large buildings with blue roofs and a long concrete wall. The background shows rolling green hills and mountains under a clear sky.

# CUSTOMISED OVERALL SOLUTIONS

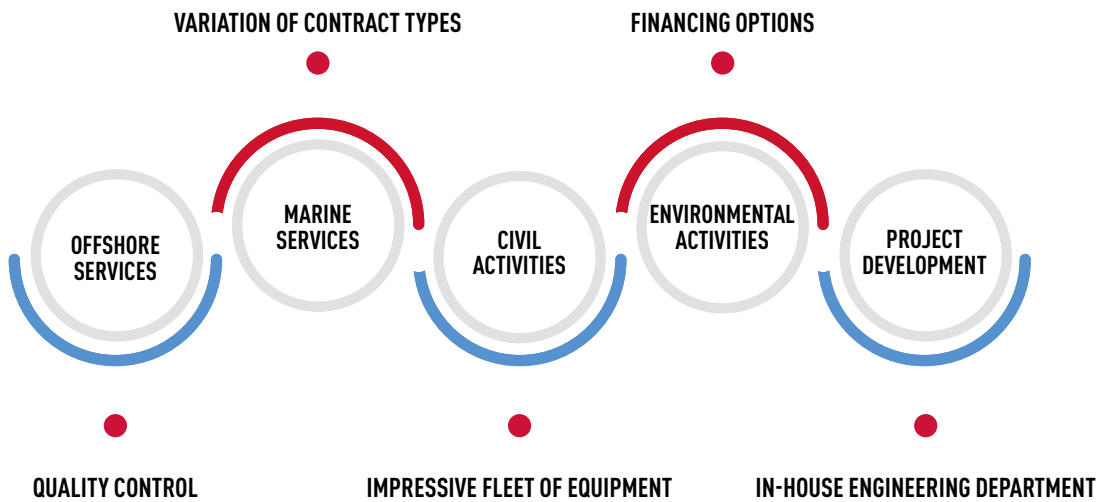
---

Offshore, marine, civil, environment or project development. Jan De Nul Group is a leading expert in five main activities. Thanks to the fruitful interaction within our company, we can offer overall solutions that combine one, several or even all these activities.

*Jan De Nul Group deepens and widens the Panama Canal, a/o with the cutter suction dredger Niccolò Machiavelli, and helps to build the two large lock complexes. Both complexes, one at the Atlantic and one at the Pacific Ocean, consist of three locks.*

# FLEXIBILITY.

Jan De Nul Group offers overall solutions for offshore, marine, civil and environmental projects. We can also handle a combination of all these activities. This enables us to combine marine and civil works e.g. when building a new port and, if pollution is involved, environmental works as well. Our engineering department and our impressive fleet of equipment, but also our contract types and financing options turn us into an extremely flexible partner. Our permanent quality control efforts ensure maximum comfort. Our clients can rest assured that their project is in excellent safe hands.





## WIDE RANGE OF ROLLING, SAILING AND HEAVY EQUIPMENT

Jan De Nul Group has a very wide range of deployable equipment, a great deal of which has been designed internally. A very diverse fleet of dredging, offshore and rolling equipment ensures that we can offer the ideal mix for realising any project. Our existing equipment needs to be adapted or something is not yet available on the market? No problem. Our in-house engineering department will work out the design itself. We also service and adapt our earthmoving machines ourselves.

Our own joinery workshop and welding shop are engaged to manufacture project- or equipment-specific parts. Jan De Nul Group also runs five valorisation centres in Europe to treat sediments and sludge.

*Jan De Nul Group continuously invests in own equipment.*

## CONTRACT AND FINANCING CONDITIONS

Jan De Nul Group can be an all-in partner for clients. We do more than contracting alone, we act as 'unburdening' partner: from responsibility for the design through quality monitoring of all suppliers and subcontractors up to all-in concession contracts or financing programmes. Jan De Nul Group can offer a comprehensive portfolio for every activity in whatever form.

## IN-HOUSE DESIGN


As the only company in our sector, Jan De Nul Group has an in-house multidisciplinary engineering division that can execute and follow up all types of project and equipment design. These in-house engineering capabilities enable us to be an all-in partner for our clients, from well ahead of the start of a project up to its complete execution. It gives us the edge to design tools and installations ourselves.



# OFFSHORE SERVICES

---

Jan De Nul Group offers specific services for the offshore energy market. Our extensive fleet of installation vessels is used for a variety of activities. We install offshore structures and protect them against erosion. However, we also disconnect and remove them if these structures are at end of life or up for replacement. Through an integrated approach from design to execution, we always ensure a creative overall solution, tailored to the client's specific needs.



*The rock installation vessel Simon Stevin dumps rocks around the foundations that were installed by the jack-up vessel Vole au vent.*

## INSTALLATION OF OFFSHORE STRUCTURES

Thanks to our versatile fleet of offshore installation vessels with lifting capacities from 1,500 to more than 5,000 tonnes, Jan De Nul Group is able to install any offshore structure: from concrete or steel foundations to offshore high-voltage stations and wind turbines.

## DISMANTLING AND HOISTING

The installation vessels of Jan De Nul Group are not only perfect for the installation of offshore structures but also for their dismantling and removal. They can handle all types of hoisting operations, including the salvaging of shipwrecks.



*The offshore installation vessel Vole au vent installs wind turbines at sea.*



## ROCK INSTALLATION WORKS

Jan De Nul Group stabilises, reinforces and protects offshore structures with gravel, rocks or concrete mattresses to fight erosion or to prevent the structure from shifting on account of the ocean currents. We also cover pipelines and cables with protective rock layers. The rocks are installed within design margins, often of only a few centimetres using (inclined) fall pipes.

*The rock installation vessel Joseph Plateau is being loaded with rocks.*



## SEABED INTERVENTIONS

Our seabed is filled with dunes, troughs and other irregularities. That is why interventions are necessary when installing offshore structures. To ensure a stable base, the seabed is first 'prepared'. We do this by dredging dunes, levelling the surface and, if needed, placing a first layer of gravel. Pipelines and cables are preferably installed under the seabed. For this, we excavate special trenches that start at sea, may pass across the foreshore and end on land.



*The trailing suction hopper dredger Cristóbal Colón dredges excavations on the seabed of the Atlantic Ocean for the installation of production pits along which gas or oil will be won.*



## INSTALLATION OF CABLES AND UMBILICALS

Jan De Nul Group connects offshore structures and brings offshore energy ashore by installing submarine cables and umbilicals. Specific vessels and tools to bury cables or to cover them with a protective layer assist or are on board our cable-laying vessels.

*The cable installation vessel Isaac Newton is equipped with two turning tables that allow continuous loading and installation of very long cables.*

# ENGINEERING, PROCUREMENT, CONSTRUCTION AND INSTALLATION.

Jan De Nul Group is also the perfect partner for EPCI projects. These projects go way beyond the traditional assignments for installation. We are responsible for integrated project studies and specific strength calculations (engineering) and for the manufacturing of all components, either outsourced to suppliers or made internally (procurement & construction).

In these projects, Jan De Nul Group also assumes full responsibility for the overall quality assurance.



*Our engineering division can work out the entire design or part of it.*





*Jan De Nul Group was responsible for the construction of the Taiwan Power Company Offshore Windfarm Phase 1 Project – Demonstration in Changhua. From the design over the construction of the foundations and their transport up to the installation of the foundations, the onshore and inter array plus export cables, the onshore substation and the wind turbines.*



*For the offshore wind farm Kriegers Flak, in Denmark, Jan De Nul Group designed and built the concrete foundations for the offshore electrical substations, on a floating pontoon. We were also responsible for transporting and installation.*





A vertical photograph on the left side of the page showing a close-up of a cutter suction dredger's cutter head and teeth churning through water and sediment.

# MARINE SERVICES

---

The activities of Jan De Nul Group ensure that shipping traffic is possible. We maintain the depth of rivers and canals, expand existing ports and build new ones. By strengthening and extending coastlines, we protect life on land. We offer clients creative and innovative customised solutions and can vouch for their design, execution and maintenance.

*The type of vessel is selected depending on the hardness of the seabed. The cutter suction dredger, equipped with cutter head and cutter teeth, is best suited for dredging hard, rocky surfaces.*

## DREDGING

By dredging waterways such as rivers, access channels, turning basins and harbour docks, these are maintained, deepened or widened for the passage of – large(r) – vessels.

Jan De Nul Group has a fleet of trailing suction hopper dredgers, cutter suction dredgers, split hopper barges and backhoe dredgers. Depending on the nature of the soil to be dredged and the required draught, the best suited vessels are deployed. When dredging contaminated sediments, Jan De Nul Group can also take on their treatment.



*Trailing suction hopper dredger Pedro Álvares Cabral contributed to the further development of the port of Rio Grande in Brazil.*



*Sand pumped ashore is spread in a controlled way over the area to be reclaimed.*

## LAND RECLAMATION

Jan De Nul Group creates new beaches and develops new land for residential, recreational or industrial use. Dredging vessels spray the soil ashore using the rainbowing technique or pump it to the shore through a pipeline. We can also use dump trucks for filling up the site.



## COASTAL AND SHORE PROTECTION

Jan De Nul Group maintains coastlines by replenishing them with sand after erosion has taken place. But we do more. We install protective structures for vulnerable coastal areas to arm them against rising sea levels. In this way, we can break heavy waves and reduce their impact on the coast. When creating coastal protection structures, we make active use of the ecological function of shores to enrich the fauna and flora.



*In Zeeland, the trailing suction hopper dredger Charles Darwin sprays on new sand to replenish the beach.*



## PORT INFRASTRUCTURE WORKS

When constructing new ports, no infrastructure is available yet and we have to start from scratch. We realise access channels, turning basins and berthing docks. We also build terminals or entire port buildings from scratch.

*In Ghana, we built the port of Takoradi, which in the subsequent years was also extended by us.*

# CONCESSIONS.

Jan De Nul Group does more than offering marine services, we also realise large-scale waterway and port infrastructure projects in concession formulas. In this way, the client remains owner but entrusts the whole project to us. Depending on the specific needs, we can take on the financing and actual realisation of the project as well as the operation and maintenance of the structure.

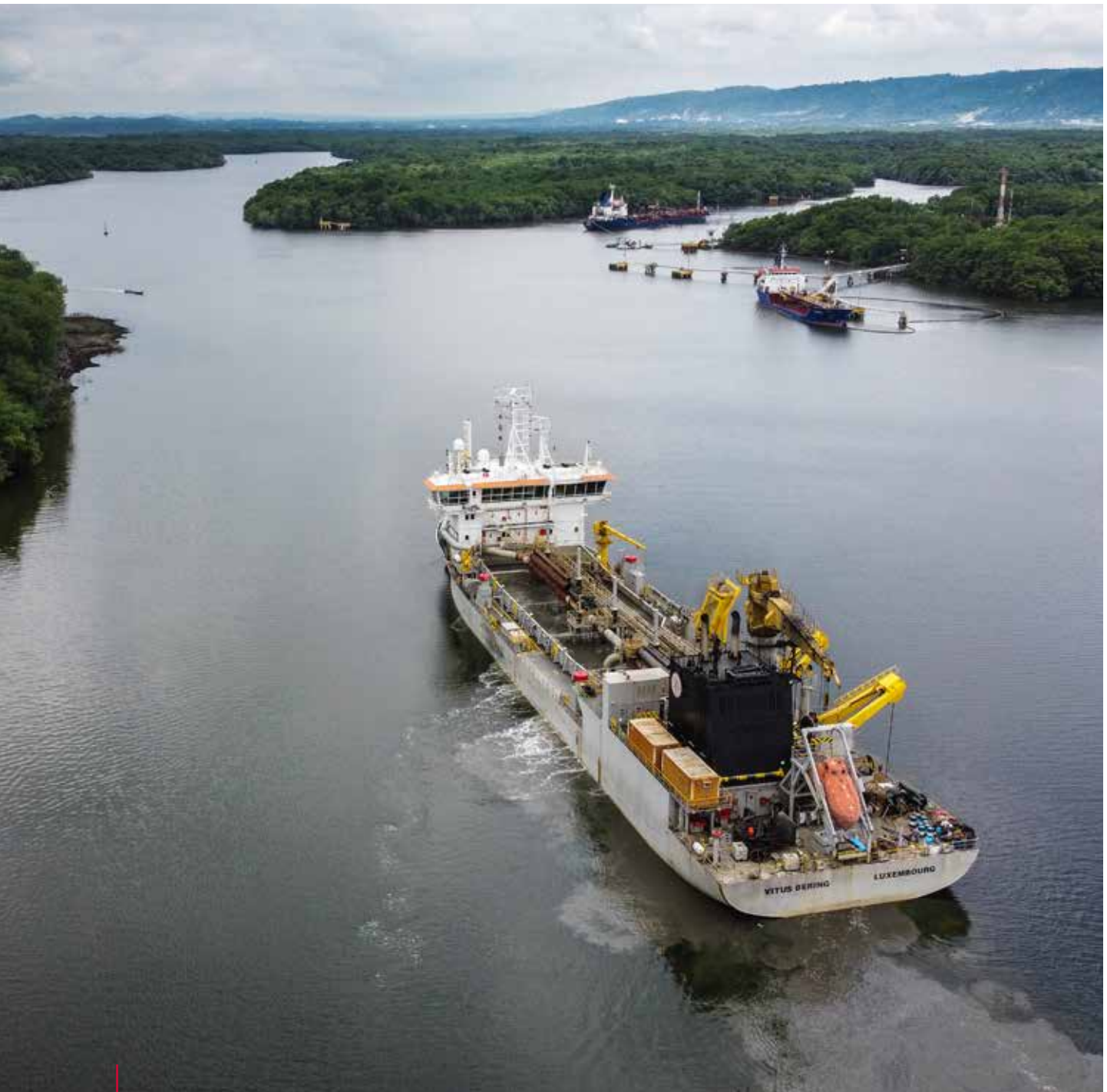


*We have a maintenance concession for the Argentine rivers Río Paraná and Río de la Plata. We are responsible for the capital and maintenance dredging works in these rivers for a period of 26 years.*



## CONCESSIONS.

---



*The trailing suction hopper dredger Vitus Bering is one of our dredging vessels that deepened the 95-km access channel to the port of Guayaquil in Ecuador. We are also responsible for the operation and maintenance of the channel under a 25-year concession contract. We finance the costs ourselves and recover them by charging toll.*



©Samyn and partners



A vertical photograph on the left side of the page shows a low-angle view of a modern building's facade. The structure is composed of a complex network of dark steel beams and glass panels, creating a grid-like pattern. The perspective is looking up, emphasizing the height and scale of the architecture.

# CIVIL ACTIVITIES

---

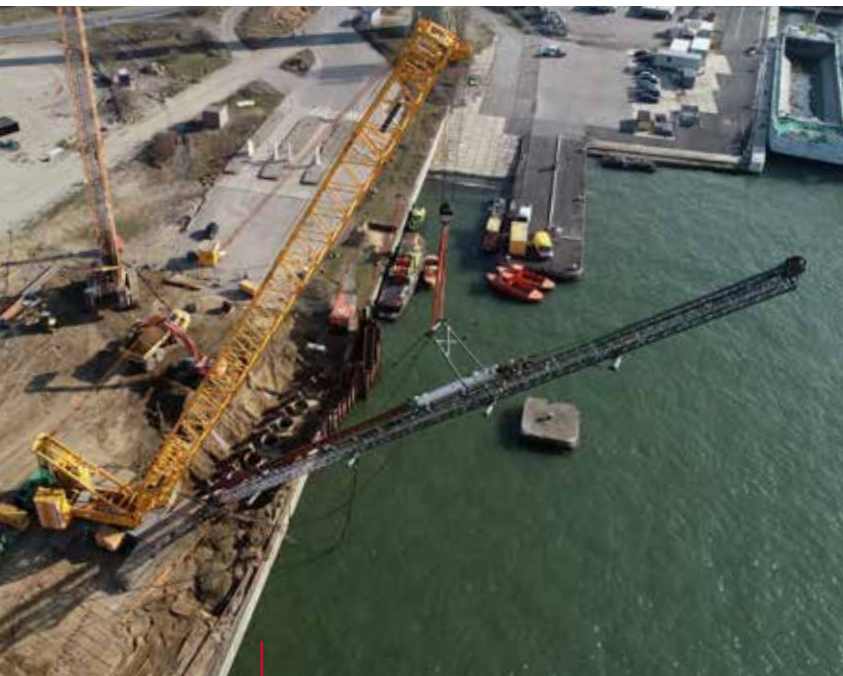
The civil activities of Jan De Nul Group contribute to improving mobility. We realise all types of projects, roads, bridges, tunnels and locks. We are also responsible for the construction of water treatment plants, sewage systems and underground train and subway connections. We use state-of-the-art and eco-friendly techniques for the buildings that we realise. After their delivery, we can ensure their subsequent maintenance.

*Jan De Nul Group built the impressive new headquarters of the European Council in Brussels.*

## BUILDINGS

From rest homes and hospitals to office buildings and residential construction projects, for both private and public clients. When executing building projects, we aim for the integration of ecological and energy-saving technologies, structures and materials and pursue the realisation of circular building concepts.

*Jan De Nul Group builds the crematorium Siesegem in Aalst. The building with a surface of over 6,000 m<sup>2</sup> is an oasis of light. Thanks to our eye for detail and the use of in-situ cast exposed concrete and natural stone, the structure fits seamlessly into the environment.*



*The execution method with MV piles for anchoring the new quay wall for the canal dock in Antwerp is tailored to the project. By using a 600-tonne crane and a cantilever pile driver guide, the heavy steel anchoring profiles (MV piles) are driven in under a slope from ashore.*

## FOUNDATION WORKS

Jan De Nul Group ensures a solid foundation for all construction works. Through our subsidiary Soetaert, we can offer all possible foundation techniques, both for buildings and infrastructure works. We use innovative foundation, sheet piling and soil improvement techniques so that on every location and in every subsoil a solution tailored to the specific project can be worked out.





## INFRASTRUCTURE WORKS

Transport, pipeline or water treatment infrastructure. Jan De Nul Group can take on the design, construction and maintenance of both existing and new infrastructure. We can do this not only for tunnels and bridges but also for road construction and sewage works.

*Jan De Nul Group helped to build the Kieldrecht lock in the port of Antwerp to enable the latter to welcome increasingly large vessels. The lock is huge in many ways: it contains triple the amount of steel as the Eifel tower and is as wide as a highway with 19 traffic lanes.*



# PUBLIC PRIVATE PARTNERSHIPS.

Jan De Nul Group has extensive experience in Public-Private Partnerships (PPP): a partnership between a public authority and private companies for the realisation of projects. Think of infrastructure works such as roads, bridges or tunnels but also the construction and operation of residential care centres, hospitals and industrial complexes.



## DESIGN, BUILD, FINANCE AND MAINTAIN

In a DBFM project, we take on all operational aspects of an infrastructure work: we design and build the infrastructure, arrange financing and are responsible for its maintenance.

*Jan De Nul Group helps to address the legacy problem of outdated educational infrastructure in Flanders. Through the PPP 'Scholen van Morgen', Jan De Nul Group builds and maintains 14 nursery, primary and secondary schools.*



*Jan De Nul Group is co-responsible for the design, construction, financing and 30-year maintenance of the A11 highway between Bruges and Westkapelle. The twelve-kilometre highway and 71 bridges, tunnels and viaducts ensure a much improved link with the port of Zeebrugge. It is the biggest DBFM project ever in Belgium.*





A vertical aerial photograph on the left side of the page shows a landscape with a river, green fields, and a forested area. A red horizontal line is positioned below the title.

# ENVIRONMENTAL ACTIVITIES

Historical pollution is a problem sometimes encountered on former industrial or active construction sites or in existing port areas. Jan De Nul Group has comprehensive experience in handling such polluted sites. We remediate on site or excavate the polluted soil and bring it to one of our valorisation centres, always in view of its reuse in alternative applications. As such, we contribute to a circular world.

*In Vlassenbroek, we go for a circular economy solution. We valorise dredged, partly contaminated sludge and reuse it for the construction of compartmenting and ring dikes that are part of a flood control area.*

## WORKS IN PORTS AND PORT AREAS

Jan De Nul Group dredges and treats polluted sediments from ports, canals and waterways. We do this in an ecologically sound way by developing specific hydraulic and mechanical equipment and techniques.

*In the Swedish port Oskarshamn, our vessel Pinta dredged polluted sediments to be pumped ashore from the harbour basin. In-house designed and built installations dewater these polluted sediments and treat the extracted polluted water.*



*Jan De Nul Group has various processing centres to valorise contaminated sediments and sludge. The centre in Toulon can process no less than 160,000 cubic metres per year.*



## SITE REMEDIATION

Jan De Nul Group remediates and redevelops polluted sites. By combining civil engineering, hydrogeology and environmental technology, we can remediate soils and groundwater in an integrated manner. We not only remediate sites but also ensure their subsequent development.



*We are co-owner of Terranova in Zelzate, Belgium. We remediated this former gypsum landfill and redeveloped it into one of the largest solar parks in the Benelux.*



*Jan De Nul Group helped to remediate the Carcoke site in Brussels. Hundreds of thousands of cubic metres of contaminated soil were excavated and cleaned. The highly contaminated groundwater was also pumped up and purified in treatment plants.*



# PROJECT DEVELOPMENT

---

Jan De Nul Group is also active in the remediation, repurposing and sustainable development of polluted industrial sites and un(der)utilised sites. For this, we apply the formula ‘Unburdening, Unlocking, Developing’. We take on the complete development track and create space for new destinations, in close cooperation with end users, investors, public authorities and business partners.

*We remediated and revitalised the long abandoned and derelict premises of a former gas factory in Lier into a high-quality residential quarter amidst a publically accessible park with ponds.*

## BROWNFIELD DEVELOPMENT

Population levels are growing. In addition to more and better-suited residential units, we also continue to need space for businesses. This exerts increasing pressure on green space, which is scarce and finite. We will thus have to do more with less space. By developing heavily contaminated or derelict sites, the so-called brownfields, we contribute to decreasing the use of green space. As a pioneer in Belgium, we are committed to eliminating environmental risks in view of the optimal redevelopment of derelict sites. As such, we revitalise long neglected polluted sites such as former factory premises or former landfills in a daring and innovative way.



*In Coronmeuse (Liege), we are redeveloping a dilapidated and polluted urban district of +60 acres into an innovative eco-friendly neighbourhood where living, working and relaxing go hand in hand.*



*In Knokke, we are currently renovating the Albertplein. The project includes the construction of an underground car park and the renovation of the existing utility networks and sewage system but also a completely new design for the aboveground public square.*

## COMPLEX REDEVELOPMENT PROJECTS

An outmoded town planning destination. Inadequate access or lack of infrastructure, fiscal and legal challenges. Aligning the policy vision of local authorities. Creating public support, but also capturing the concerns of local residents and other stakeholders. All these elements make urban renovation and redevelopment projects very complex. For this reason, sites with promising potential often remain blocked and un(der) utilised for far too long. We make a difference here through our integrated, multidisciplinary approach and stakeholder management. We succeed in unlocking and upgrading such complex sites.



*The Inofer site contained a press shop for non-ferrous metals but also a malt-house and a rubber factory have left their marks: environmental pollution that we clean up but also valuable architectural heritage that we renovate and integrate in a sustainable way in an innovative development project combining office space and residential units.*

## CONVERSION PROJECTS

We revalorise un(der)utilised immovable heritage towards optimal new destinations. We safeguard, integrate and reactivate valuable relicts of our past by giving them a sustainable and active role in the present. We have extensive experience in the conversion of industrial heritage such as warehouses and workshops. However, we are also experts in handling 'other' innovative conversion projects such as vacant hospitals, schools, public buildings or military domains.



*On the site of a former cattle feed company in Izegem, we realised a high-quality residential building project with apartments and penthouses on the Roeselaere-Leie canal.*

## REGULAR REAL ESTATE DEVELOPMENT

The regular or conventional real estate development has stopped being 'easy' a long time ago. Also within this sector, the challenges and complexity have increased considerably. Our commitment when handling large-scale and smaller real estate projects: an optimum spatial integration of the project area in the immediate vicinity, architectural quality, focus on sustainable project development and stakeholder management. We execute both residential, retail, leisure, office and semi-industrial development projects.

# CONTACT.

## **BELGIUM**

Jan De Nul nv  
Tragel 60  
9308 Hofstade-Aalst | Belgium  
**T** Nat. div.: +32 53 73 15 11  
Int. div.: +32 53 73 17 11  
**F** +32 53 78 17 60  
+32 53 77 28 55  
info@jandenul.com

## **LUXEMBOURG**

Dredging and Maritime Management sa  
34-36, Parc d'Activités Capellen  
8308 Capellen | Luxembourg  
**T** +352 39 89 11  
**F** +352 39 96 43  
info@dmmlux.com

## **RESPONSIBLE EDITOR**

Jan De Nul Group [Sofidra sa]  
Luxembourg  
info@jandenulgroup.com  
www.jandenul.com

## **SOCIAL ADDRESS**

34-36, Parc d'Activités Capellen,  
8308 Capellen | Luxembourg

## **LAYOUT AND TEXT**

Communication department Jan De Nul Group

We do our bit for an ecological world, which is why this brochure is published on recycled paper (Nautilus - Super White).

The content of this document is provided strictly for information purposes only. Whilst it has been endeavoured to procure completeness and accuracy, no warranty - express or implied - is given, in particular of fitness for a particular purpose. In no event any Jan De Nul Group company will be liable for any whatsoever damages arising directly or indirectly from the use of or reliance on the content provided herein, even if (previous) advice has been given/received that such damages may occur.





[JANDENUL.COM](http://JANDENUL.COM)