



Technical Specifications

# Heavy Equipment.

JANDENUL.COM

## BULLDOZERS CHARGEUSES A CHÂÎNES / #64



Make	Type	Track type	Engine power kW	Operation weight Ton	# in fleet	ULEM
KOMATSU	D37	LGP	68	9.3	1	1
CATERPILLAR	D6	LGP	192	23	42	6
CATERPILLAR	D6	LGP	174	23	6	
CATERPILLAR	D6	LGP	161	25	5	5
CATERPILLAR	D8	LGP	245	38	1	
CATERPILLAR	D8	XL	245	38	9	

## DUMP TRUCKS TOMBREAUX ARTICULÉS / #77



Make	Type	Load Capacity m³	Engine power kW	Empty Weight Ton	# in fleet	ULEM
CATERPILLAR	740	25.5	350	34.2	3	
CATERPILLAR	745	26.5	381	33.4	6	6
VOLVO	A25	15.6	235	22.5	6	5
VOLVO	A40	24.7	350	29.8	62	12

## WHELLOADERS CHARGEUSES SUR PNEUS / #71



Make	Type	Engine Power kW	Bucket Capacity m³	Operation weight Ton	# in fleet	ULEM
CATERPILLAR	950	147	3.5	18	2	
CATERPILLAR	966	232	9.2	23	4	
CATERPILLAR	972	251	9.9	25	3	2
CATERPILLAR	980	313	12	30	35	2
CATERPILLAR	988	414	7	50	3	1
AHLMANN	AZ45	30	0.6	5	1	
CATERPILLAR	IT14	72	1.4	8	3	
VOLVO	L150	220	6	26	2	2
VOLVO	L45	81	2.5	8	9	
KUBOTA	R310	19	0.3	2	1	
HITACHI	ZW180	129	2.8	15	1	
HITACHI	ZW250	186	3.8	21	1	
HITACHI	ZW310	220	4.2	22	2	1
HITACHI	ZW370	255	5	25	4	

## TRACKED EXCAVATORS PELLES HYDRAULIQUES / #191



Make	Type	Bucket capacity m³	Engine power kW	Operation weight Ton	# in fleet	ULEM
CATERPILLAR	320	1.3	114	22.5	1	
CATERPILLAR	325	1.3	128	27.5	1	1
CATERPILLAR	350	3.2	310	52.5	4	
CATERPILLAR	395	6	405	94.1	1	
CATERPILLAR	320	1.3	114	23.5	1	
CATERPILLAR	336	1.9	200	35	1	
CATERPILLAR	349	2.4	305	50	6	
CATERPILLAR	350FG	27	310	47.6	4	
CATERPILLAR	6015	8.1	556	140	1	1
NEW HOLLAND	E135	0.7	74	13.5	1	
NEW HOLLAND	E225	0.9	118	23	2	
NEW HOLLAND	E235	1	118	26	1	
NEW HOLLAND	E50	0.3	32	5	1	
NEW HOLLAND	E85	0.35	42	8.3	1	
VOLVO	EC460	3.8	178	48	2	
HITACHI	EX1200	5.9	567	111	7	2
HITACHI	EX2000	12	746	195	2	
KUBOTA	KX080	0.5	39	8	9	
KUBOTA	KX085	0.25	46	8.5	2	2
KUBOTA	KX161	0.4	34	5.4	2	
KUBOTA	KX91	0.2	23	3.6	5	
KOMATSU	PC228	1.49	123	26.9	1	1
KOMATSU	PC290	2	149	31	1	
LIEBHERR	R984	10	504	123.4	6	
KOBELCO	SK140	0.7	74	16.9	2	
TEREX	TC16	0.09	13	1.6	1	
KUBOTA	U25	0.1	16	2.5	1	
KUBOTA	U35	0.2	23	3.6	3	
KUBOTA	U36	0.2	18	3.9	4	4
KUBOTA	U50	13	297	5	1	
KUBOTA	U55	2	32	5.6	1	1
KUBOTA	U55	0.2	32	5.6	3	
HITACHI	Zaxis 110	0.6	69	12.2	2	
HITACHI	Zaxis 130	0.7	69	13.6	3	1
HITACHI	Zaxis 135	0.7	74	14.8	4	4
HITACHI	Zaxis 135	0.7	69	13.6	3	3
HITACHI	Zaxis 210	1	119	21.9	16	2
HITACHI	Zaxis 225	0.8	128	26.6	6	6



## TRACKED EXCAVATORS - TRIPLE BOOM PELLES HYDRAULIQUES - FLÈCHES À TROIS PIÈCES / #14



Make	Type	Bucket capacity	Engine power	Operation weight	# in fleet	ULEA
		m <sup>3</sup>	kW	Ton		
HITACHI	Zaxis 225	0.8	122	23.6	13	9
HITACHI	Zaxis 350	1.5	202	35.1	1	
HITACHI	Zaxis 350	1.4	202	35.1	14	9
HITACHI	Zaxis 350	1.4	202	44.1	1	1
HITACHI	Zaxis 350	1.4	202	36.5	1	1
HITACHI	Zaxis 470	2.65	235	47	6	
HITACHI	Zaxis 470	2.5	270	51.2	6	
HITACHI	Zaxis 490	2.5	296	52.2	5	4
HITACHI	Zaxis 490	2.5	270	51.2	4	4
HITACHI	Zaxis 530	25	296	52.2	3	
HITACHI	Zaxis 690	4	348	71.4	1	1
HITACHI	Zaxis 80	0.5	39	8	1	
HITACHI	Zaxis 870	4.5	397	86.2	13	
HITACHI	Zaxis 870	4.5	397	82.6	1	
HITACHI	Zaxis 870	4.5	360	85	8	

Make	Type	Bucket capacity	Engine power	Operation weight	# in fleet	ULEA
		m <sup>3</sup>	kW	Ton		
KUBOTA	KX080	0.5	48	8.2	3	1
HITACHI	Zaxis 225	0.8	122	23	2	2
HITACHI	Zaxis 225	0.8	128.4	27.2	6	6
HITACHI	Zaxis 350	1.4	210	37.5	1	1
HITACHI	Zaxis 870	4.5	397	95	2	

## SWAMP EXCAVATORS PELLES HYDRAULIQUES AMPHIBIE / #2



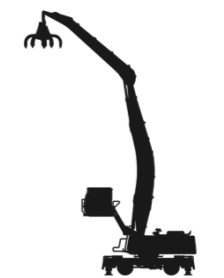
Make	Type	Bucket capacity	Engine power	Operation weight	# in fleet	ULEA
		m <sup>3</sup>	kW	Ton		
Hitachi	ZAXIS 350 LC-5 (Amphibious soft terrain backhoe)	1.4	202	34.7	1	
Hitachi	MA200	0.5	122	22	1	

## ELEVATED EXCAVATORS - STARFISH PELLES HYDRAULIQUES ÉLEVÉ - STARFISH / #5



Make	Type	Engine power	Bucket capacity	Operation weight	# in fleet	ULEA
		m <sup>3</sup>	kW	Ton		
HITACHI	0.46	MA200	122	32	1	
HITACHI	4.5	Zaxis 870	397	130	4	

## EXCAVATORS - MATERIAL HANDLER PELLES DE MANUTENTION / #2



Make	Type	Bucket capacity	Engine power	Operation weight	# in fleet	ULEA
		m <sup>3</sup>	kW	Ton		
HITACHI	Zaxis 470	2.5	270	55	2	1

## WHEELED EXCAVATORS PELLES SUR PNEUS / #16



Make	Type	Bucket capacity	Engine power	Operation weight	# in fleet	ULEA
		m <sup>3</sup>	kW	Ton		
KOMATSU	PW160	1	97	16	3	
HITACHI	Zaxis 140	0.45	100	16	5	4
HITACHI	Zaxis 150W	0.92	105	16.4	5	5
HITACHI	Zaxis 160	0.92	90	17	2	
HITACHI	Zaxis 210	1.2	122	21	1	



## GRADERS NIVELEUSES / #3



Make	Type	Engine power kW	Blade width m	# in fleet	ULEM
CATERPILLAR	140M	186	3.7	1	
CATERPILLAR	14M	178	4.2	1	
VOLVO	G930	154	3.66	1	

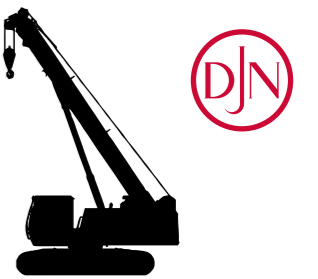
## COMPACTORS COMPACTEURS / #23



Make	Type	Engine power kW	Operation weight Ton	# in fleet	ULEM
BOMAG	BW120	21	3	2	
BOMAG	BW213	119	15	2	
BOMAG	BW213	119	16	1	1
BOMAG	BW219	140	19	3	
BOMAG	BW219	140	23	2	1
BOMAG	BW226	150	27	4	
BOMAG	BW226	150	23	2	
CATERPILLAR	CS-533	97	11	7	



## TELESCOPIC CRANES - TRACKS GRUES TÉLESCOPIQUES - A CHÂÎNES / #28

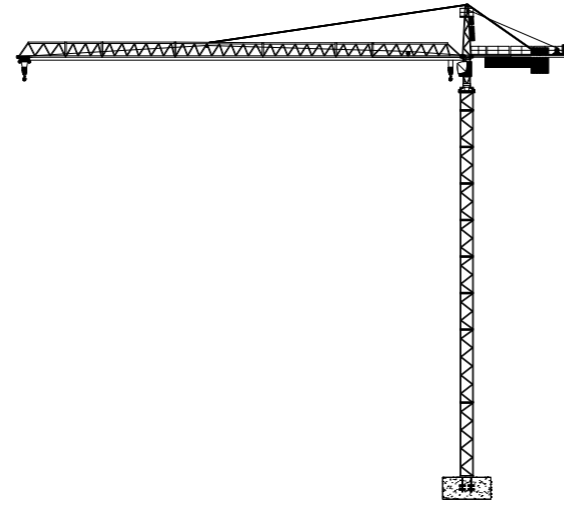


Make	Type	Max load Ton	Engine power kW	Operation weight Ton	# in fleet	ULEM
SENNEBOGEN	613M	16	76	18	1	
SENNEBOGEN	630R	30	150	36	6	
SENNEBOGEN	643R	40	135	43	6	
SENNEBOGEN	653R	50	129	50	10	9
STARLIFT	CX-8T	8	42	9	2	
LIEBHERR	LTR1100	100	150	102	2	1
TEREX	TCC60	60	164	60	1	



## CRAWLER CRANES GRUES DE LEVAGE / #44

Make	Type	Max load Ton	Engine power kW	Operation weight Ton	# in fleet	ULEM
KOBELCO	CKE800	80	159	73.8	1	
LIEBHERR	HS8130	130	505	116	3	3
LIEBHERR	HS8200	200	750	172	6	6
LIEBHERR	HS895	175	670	172	7	
HITACHI	KH500	100	206	118.3	1	
LIEBHERR	LR1300	300	390	300	1	
LIEBHERR	LR1600	600	400	360	1	
SANY	SCC1000	100	183	90	1	
SANY	SCC500	55	127	35	2	
SUMITOMO	SCX1000	100	273	104	3	2
SUMITOMO	SCX1000	100	201	104	1	
SUMITOMO	SCX1500	150	201	139	6	1
HITACHI	SCX550	55	185	52.3	2	
HITACHI	SCX700	70	148	68.2	7	
HITACHI	SCX800	80	212	75	1	
HITACHI	SCX900	90	184	85	1	
HITACHI CRANE	SCX550	100	185	52.3	2	



## TOWER CRANES GRUES À TOUR / #32

Make	Type	Max load	Max Reach	# in fleet	ULEM
		Ton	m		
Liebherr	110ECB	6	55	1	1
Liebherr	154ECH	6	60	2	2
Liebherr	200ECH	10	60	5	5
Liebherr	202ECB	10	65	1	1
Liebherr	245ECH	12	65	6	6
Liebherr	250ECB	12	70	1	1
Liebherr	280ECH	16	70	1	1
Liebherr	280ECH	12	70	7	7
Liebherr	420ECH	16	75	1	1
Liebherr	470ECB	20	80	1	1
Liebherr	85ECB	5	50	2	2
POTAIN	MD1100	70	70	1	1
ARCOMET	T33	4	30	3	3

## TELESCOPIC HANDLERS CHARIOTS TÉLESCOPIQUES / #45



Make	Type	Engine power	Operation weight	Max load	# in fleet	ULEM
		kW	Ton	Ton		
CATERPILLAR	TH414	75	10	4	2	
CATERPILLAR	TH417	75	12	4	1	
CATERPILLAR	TH460	75	10	4	1	
CATERPILLAR	TH514	75	11	5	19	6
CATERPILLAR	TH560	75	11	5	2	
KOBELCO	T14	88	14	4	1	
LIEBHERR	T60-9S	115	12	6	3	
MANITOU	MRT2150+	115	18	5	1	1
MANITOU	MTX733	70	7	3	10	
MANITOU	MRT2260	115	18	6	1	1
MANITOU	MT1033	55	8	3	3	3
MERLO	P72.10	75	11	5	1	

## TELESCOPIC CRANES - ROUGH TERRAIN GRUES TÉLESCOPIQUES - TOUT TERRAIN / #26



Make	Type	Max load	Engine power	Operation weight	# in fleet	ULEM
		Ton	kW	Ton		
TEREX	A400	35	113	28	1	
PPM	A600	60	132	41	1	
LIEBHERR	LRT1090	90	188	55.5	3	1
GROVE	RT530	30	116	25	2	
GROVE	RT540	35	119	28	2	
GROVE	RT650	45	129	33	2	
TEREX	RT665	60	160	39	1	
GROVE	RT760	55	179	39	2	
GROVE	RT765	60	179	40	1	
MANITOWOC	RT765	60	179	40	2	
GROVE	RT875	68	205	50	1	
GROVE	RT880	68	205	50	3	
GROVE	RT890	80	205	60	4	
GROVE	RT9130	120	224	70	1	

## TRACTORS TRACTEURS / #2



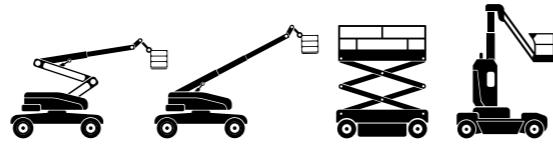
Make	Type	Engine power	Operation weight	# in fleet	ULEM
		kW	Ton		
NEW HOLLAND	T8050	201	9.3	1	
NEW HOLLAND	TN70F	49	4.2	1	

## MANOEVRABLE VACUUM CLEANER - NUL-O-PLASTIC ASPIRATEUR MANIABLE - NUL-O-PLASTIC / #1



Make	Type	Payload	Engine power	Net weight	# in fleet	ULEM
		kg	kW	Ton		
TENNANT OUTDR&SIT-ON	TENNANT OUTDR&SIT-ON	R754EU4	74	2,100	1	

## ELEVATED WORK PLATFORMS NACELLES ELÉVATRICES / #44



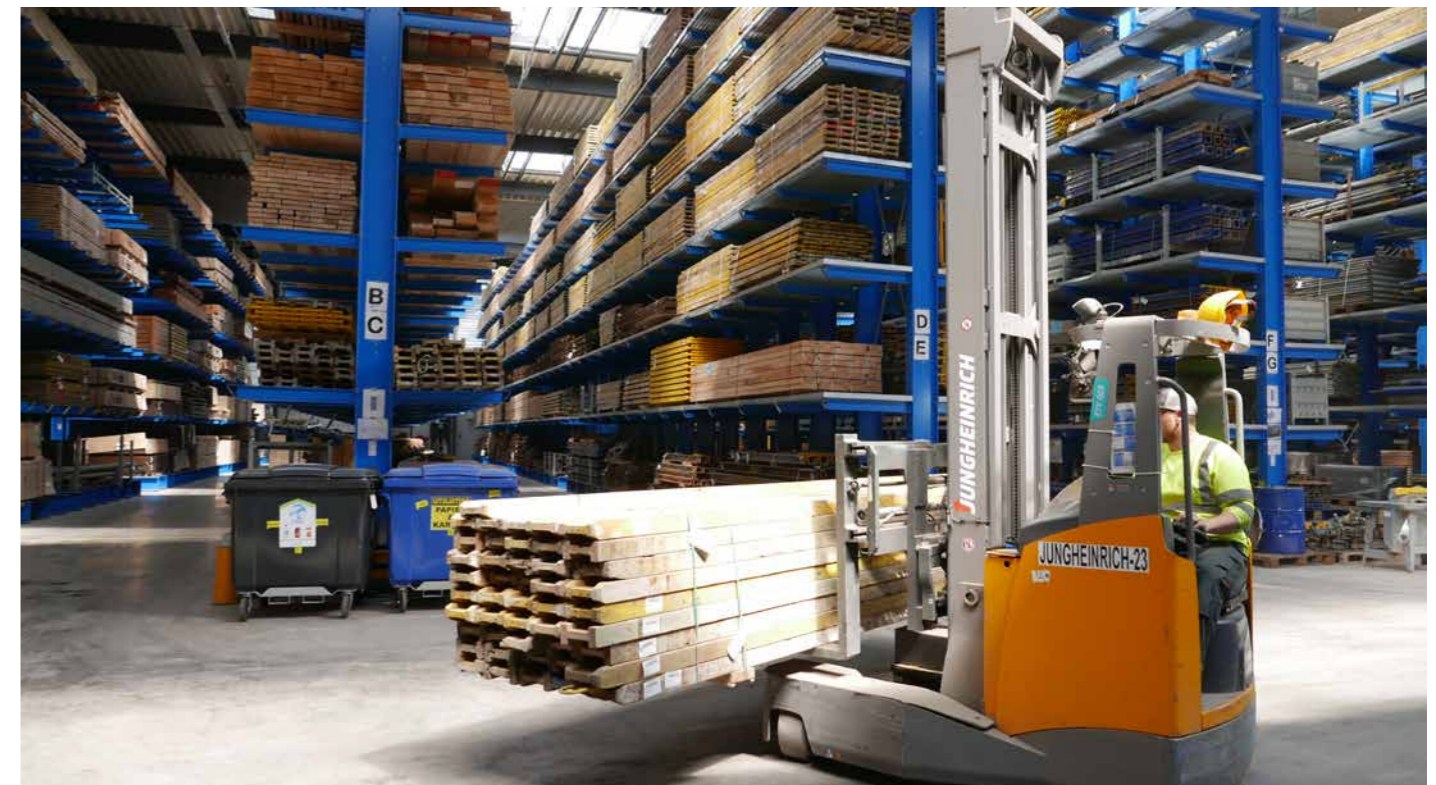
Make	Type	Max Reach	Operation weight	# in fleet	ULEM
		m	Ton		
JLG	1250AJP	40	21	1	
JLG	3246ES	9.68	2.8	2	
JLG	340AJ	12.33	4.4	1	
JLG	600AJ	18.46	11	1	
JLG	600SC	18.36	10	5	
SKYJACK	6832RTE	12	3.5	2	
MANITOU	ATJ160	14.1	6	3	
MANITOU	ATJ160+	14.25	8	4	
MANITOU	ATJ160E	8	6.4	1	
AICHI	SR12C	11.7	7.7	8	
AICHI	SR12C1SM	10.7	7.5	3	3
AICHI	SR18A	18	13	4	
MANITOU	TJ280	25.75	17	1	
GENIE	TZ50	15.09	2	1	
UPRIGHT	X32	9.63	2.6	1	
GENIE	Z30	9.1	6.6	1	
GENIE	Z34	10.52	5.2	1	
GENIE	Z45	14	6.3	1	
GENIE	Z51	15.62	7.2	3	



## FORKLIFTS CHARIOTS ELÉVATEURS / #38



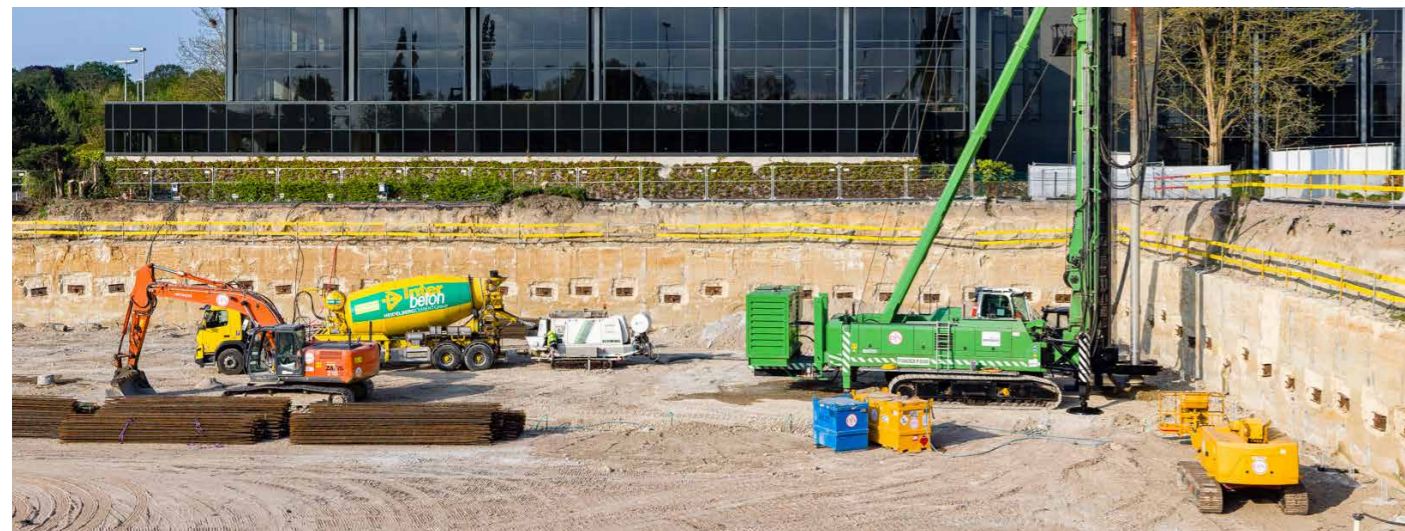
Make	Type	Max load	Engine power	Operation weight	# in fleet	ULEM
		Ton	kW	Ton		
TOYOTA	40-8FD50N	5	55	7	1	
COMBILIFT	C4000	4	44	6	1	
COMBILIFT	C6000	6	74	11	3	
KALMAR	DCD250	25	167	35	1	
KALMAR	DCE100	10	147	16	1	
KALMAR	DCE160	16	185	24	1	
KALMAR	DCG160	17	185	24	3	1
JUNGHEINRICH	DFG425	2.5	42	4.5	1	
JUNGHEINRICH	DFG550	5	64	7.5	1	
CATERPILLAR	DP150	15	100	18	1	
JUNGHEINRICH	EFG S30	3	22	5.5	2	2
JUNGHEINRICH	EFG S50	5	42	8	1	
COMBILIFT	EL-4T	4		6	1	
COMBILIFT	EL-5T	5	24	7	1	
JUNGHEINRICH	ETV116	1.6	10	2.2	2	
JUNGHEINRICH	ETVA16	1.6	6	3.6	1	
JUNGHEINRICH	ETVC20	2	6	3	1	
JUNGHEINRICH	ETVQ20	2	8	4.5	7	
JUNGHEINRICH	ETVQ25	2.5	24	4	3	
KOMATSU	FD25	2.5	42	4	1	
KOMATSU	FD30	3	48	5	1	
MITSUBISHI	FD30NT	3	38	4.3	1	
KALMAR	SMV 17-1200C	17	185	23.1	1	
UNICARRIERS	UFW250	2.5	22	6	1	



## MOBILE COMPRESSORS COMPRESSEURS MOBILES / #126



Make	Type	Air Pressure	Free Air delivery	Engine Power	# in fleet	ULEM
		bar	l/min	kW		
KAESER	M250	14	20000	210	1	
ATLAS COPCO CONSTR	U190	7	5400	33	4	
ATLAS COPCO CONSTR	XA300	7	7600	58	1	
ATLAS COPCO CONSTR	XAS 58	7	5000	33	1	
ATLAS COPCO CONSTR	XAS 58	7	3000	265	1	
ATLAS COPCO CONSTR	XAS136	7	8100	57	2	
ATLAS COPCO CONSTR	XAS137	7	7700	56	6	
ATLAS COPCO CONSTR	XAS185	7	10500	104	4	
ATLAS COPCO CONSTR	XAS36	7	2040	16	1	
ATLAS COPCO COMPR	XAS37	7	2040	16	8	
ATLAS COPCO CONSTR	XAS400	7	12000	93	2	
ATLAS COPCO CONSTR	XAS46	7	2580	20	3	
ATLAS COPCO CONSTR	XAS47	7	2600	22	7	
ATLAS COPCO CONSTR	XAS47	7	2600	19	16	
ATLAS COPCO CONSTR	XAS48	7	2600	22	39	14
ATLAS COPCO CONSTR	XAS56	7	3000	23	1	
ATLAS COPCO CONSTR	XAS60	7	3500	25	2	
ATLAS COPCO CONSTR	XAS65	7	3600	30	1	
ATLAS COPCO CONSTR	XAS67	7	3500	33	6	
ATLAS COPCO CONSTR	XAS77	7	4300	31	1	
ATLAS COPCO CONSTR	XAS97	7	5300	36	11	
ATLAS COPCO CONSTR	XATS400	10	10800		1	
ATLAS COPCO CONSTR	XAVS1000	14	25500	264	4	
ATLAS COPCO CONSTR	XAVS407	14	24360	224	1	
ATLAS COPCO CONSTR	XAVS448	14	26820	232	1	
ATLAS COPCO COMPR	XRHS366	25	22200	224	1	



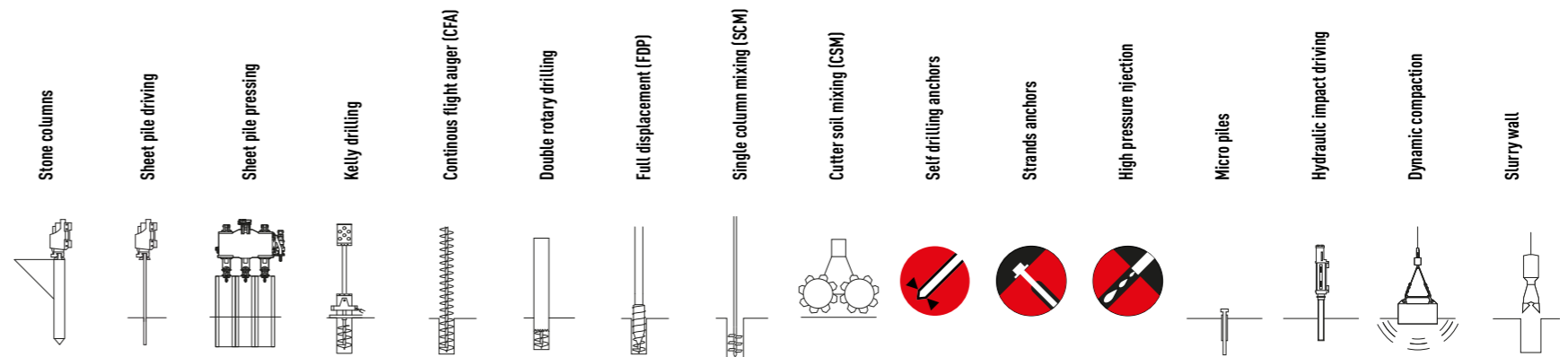
## HYDRAULIC POWER PACKS UNITÉS DE PUISSANCE HYDRAULIQUE / #61



Make	Type	Max Flow	Engine Power	# in fleet	ULEM
		l/min	kW		
VAPO	200GD	290	129	1	
PTC	60HFV	800	560	1	
HYCOS	DHP225	350	225	1	
HYCOS	DHP350	370	262	1	
HYCOS	DHP75	110	75	1	
GOMUTEC		120	85	1	
VAPO		111	55	2	
HYDROSAN		110	65	1	
VAN HEMERT		46	26	52	



# FOUNDATION EQUIPMENT ÉQUIPEMENTS DE FONDATION



Base carrier	Make / Type	# in fleet	Weight Ton	Engine power kW	Max depth m	Max diameter mm	Leader guided vibrators	Sheet pile press	Drilling motor	SCM motor	CSM cutter	Drilling motor	Impact driver	Drop weight	Slurry wall grab	ULEM		
Telescopic leader rig	ABI TM13/16	1	49	257	16	750	MRZV17VV	MRZV17VV	HPS	MBA2250 MBA3500 MBA4500		MBA3500 MBA4500						
Telescopic leader rig	Bauer RG19	1	64.5	563	19	520	MR125	MR125		DKS60/80 MB55	DKS60/80		MB55	BCM5 BCM10				
Telescopic leader rig	Bauer RG21	1	76	563	21	520	MR125	MR125		DKS60/80 MB55	DKS60/80		MB55	BCM5 BCM10				
Fixed leader rig	Bauer RG18	1	77.0	563	18	880	MR125	MR125		DKS100/200 DKS60/80 MB55	DKS100/200 DKS60/80	DKS100/200	MB55	BCM5 BCM10				
Fixed leader rig	Bauer RG22	3	78.9	563	22	880	MR125	MR125		DKS100/200 DKS60/80 MB55	DKS100/200 DKS60/80	DKS100/200	MB55	BCM5 BCM10				
Fixed leader rig	Bauer RG25	1	84.7	563	25	880	MR125	MR125		DKS100/200 DKS60/80 MB55	DKS100/200 DKS60/80	DKS100/200	MB55	BCM5 BCM10				
Fixed leader rig	Liebherr LRB355	3	95.3	600	26	1500			BAT410 BAT450	DBA300	DBA300	DBA300 BAT410 BAT450	DBA300					
Fixed leader rig	Liebherr LB36	1	100.6	390	65	1500			BAT410 BAT450	DBA300	DBA300	DBA300 BAT410 BAT450	DBA300					
Fixed leader rig	Hitachi KH500GLS	1		206	28										S150			
Crawler crane & swinging leader	Liebherr LR1300 + LRH600	1		400	49										S150			
Crawler drill rig	Klemm KR806	3	23 ton	160 - 245	40	220											KD1215R KH22 KH39	
Crawler drill rig	Commachio MCF04	1		126	40	220											HD5012	
Drill rig attached to excavator	Klemm KA140 + Kobelco E235	2			30	150											KD511	
HD crawler crane	HS8130	3															Dropweight	K810 II HD HSWG800



## ATTACHMENTS ACCESSOIRES / #36

Attachment	Type	#	Weight	Most important specifications			
<b>TON</b>							
Leader guided vibrator	Bauer MR125	3	5	Centrifugal force = 1250kN	Eccentr. moment = 0-22kgm	Max. rpm = 2300	
Leader guided vibrator	ABI MRZV17VV	1	3.4	Centrifugal force = 750kN	Eccentr. moment = 0-17kgm	Max. rpm = 2600	
Sheet pile press	ABI HPS	1	3.9	Press force = 3 x 600kN	Pull force = 3 x 380kN		
Drilling motor	ABI MBA2250	1	0.65	Max. torque = 22.5kNm	Max. rpm = 60		
SCM motor	ABI MDBA3500	1	1.4	Max. torque = 35kNm	Max. rpm = 170		
SCM motor	ABI MDBA4500	1	1.4	Max. torque = 44kNm	Max. rpm = 120		
SCM motor	Bauer MB55	1	3.5	Max. torque = 56kNm	Max. rpm = 85		
Drilling motor	Bauer DKS60/80	1	5.3	Max. auger torque = 62kNm	Max. casing torque = 83kNm	Max. auger rpm = 66	Max. casing rpm = 48
Drilling motor	Bauer DKS100/200	2	7.7	Max. auger torque = 100kNm	Max. casing torque = 200kNm	Max. auger rpm = 40	Max. casing rpm = 20
Drilling motor	Liebherr DBA300	3	12.1	Max. auger torque = 150kNm	Max. casing torque = 300kNm	Max. auger rpm = 31	Max. casing rpm = 26
Drilling motor	Liebherr BAT410	1	6.3	Max. torque = 410kNm	Max. rpm = 37		
Drilling motor	Liebherr BAT450	2	6.5	Max. torque = 450kNm	Max. rpm = 37		
Drilling motor	Klemm KD1215R	4	0.53	Max. torque = 13.5kNm	Max. rpm = 280	Blow freq. = 2600/min	Blow energy = 500Nm
Drilling motor	Klemm KH22	2	0.31	Max. torque = 24.5kNm	Max. rpm = 203		
Drilling motor	Eurodrill HD5012	1	0.7	Max. torque = 14.1kNm	Max. rpm = 208	Blow freq. = 2300/min	Blow energy = 650Nm
Drilling motor	Klemm KD511	2	0.27	Max. torque = 5.5kNm	Max. rpm = 362	Blow freq. = 2800/min	Blow energy = 400Nm
Drilling motor	Klemm KH14SK	1		Max. torque = 14.5kNm	Max. rpm = 243		
Impact driver	IHC S90	1	10	Blow freq. = 46/min	Blow energy = 90kNm		
Impact driver	IHC S150	1	23	Blow freq. = 44/min	Blow energy = 150kNm		
CSM cutter	Bauer BCM5	12	5.2 (w/o tube)	Max. torque = 57kNm	Max. rpm = 35	Max. wall dimensions (LxW) = 2.4x1.0m	
CSM cutter	Bauer BCM10	8	8.2 (w/o tube)	Max. torque = 100kNm	Max. rpm = 30	Max. wall dimensions (LxW) = 2.8x1.2m	
Mechanic grab	K810 II HD	3	20.7	Max. wall dimensions (LxW) = 2.8x1.2m			
Hydraulic grab	HSWG800	1	23.1	Max. wall dimensions (LxW) = 2.8x1.2m			
Drop weight		1	21	Outer diameter = 2.0m		Height = 1.9m	



## FREE HANGING VIBRO HAMMERS MARTEAUX VIBRANTS SUSPENSION LIBRE / #13

Vibro Hammer	# in fleet	Clamp	Weight	Ecc. moment	Max. rpm	Power pack
			<b>Ton</b>	<b>kg-m</b>	<b>rpm</b>	<b>Ton</b>
PTC10HFV	1	Agriplex 85t	3.2	0-10	2300	PTC220
PTC20H6	1	Agriplex 170t	5.1	23	2300	PTC450
ICE815	1	PVE200T	10.1	46	1570	ICE600RF
PTC34	1	PTC240T	12	0-34	1760	PTC34
PVE2350VM	1	PVE350T	17	0-50	2300	PVE1400M
PVE24VM	2	PVE150T	8.0	0-24	2300	ICE525
PVE28VM	2	PVE200T	9.0	0-28	2300	ICE600RF
PVE35VM	2	PVE350T	10.5	0-35	2300	ICE1000RF
PVE40VM	1	PVE200T	10.7	0-40	2000	PVE800



## EXCAVATOR MOUNTED VIBRO HAMMERS MARTEAUX VIBRANTS MONTÉS SUR PELLES HYDRAULIQUES / #2

Vibro Hammer	Clamp	Weight	Ecc. moment	Max. rpm
		Ton	kg-m	rpm
ICE 8RF	60TU	3.4	0-7.5	2300
ICE428B	60TU	2.8	0-4.6	2800



With our Ultra-Low Emission machines, we go for a green and sustainable approach: new machines for use in high regulated countries are fitted with a state-of-the-art filter system that processes exhaust gases and prevents NOx and nanoparticle emissions. These machines are at least TIER4 Final, EU Stage IV and V compliant.



13/09/24

**Jan De Nul Group (Sofidra sa)**  
34-36, Parc d'Activités Capellen  
L-8308 Capellen  
Grand Duchy of Luxembourg

The content of this document is provided strictly for information purposes only. Whilst it has been endeavoured to procure completeness and accuracy, no warranty - express or implied - is given, in particular of fitness for a particular purpose. In no event any Jan De Nul Group company will be liable for any whatsoever damages arising directly or indirectly from the use of or reliance on the content provided herein, even if (previous) advice has been given/received that such damages may occur.

JANDENUL.COM

